



ventway
SPARROW



Product Brochure

INOVYTEC 
THE POWER TO SAVE LIVES



✓ Ultra Portable Turbine Ventilator

The Ventway's unique combination of high-performance, functionality, and compact design, position it among the top emergency and transport ventilators.

Designed to be impact resistant, ultra portable and user-friendly, the Ventway Sparrow enhances the standard of care in both Field and Combat medicine. Ventway enables effective ventilation from the point of injury all the way to the ICU while using just one ventilator.



Ultralight

Easy to carry and handle



Maintenance Free

Durable and reliable device that delivers continuous ventilation, and only requires periodic filter replacement



Multifunctional

Hospital performance in the field

Ventway Sparrow

P/N: VWSP-100

Dimensions: 165×167×60 mm | Weight 1.3 kg



Performance Data

Ventilation Modes	SIMV-VC-PS, SIMV-PC, CPAP, HFNC [▲] , CPR Mode [▲]
Adult & Pediatric	Patient Weight >5 Kg (11 lb)
Respiratory Rate	1 – 60 ± 1 bpm
Peak Inspiratory Pressure	0-60 cm H ₂ O
Tidal Volume	50-2000 mL ±10% + 4 mL
Inspiratory Pressure Limit	11 to 60 cm H ₂ O ± 2 cm H ₂ O or 10% whichever is greater
Inspiratory Time	0.3 to 4 ± 10% sec
I:E Ratio	1:4 to 4:1
Peak Flow (PIF)	Mandatory breaths: 135 L/min (-5% to +10%) Spontaneous breaths: 160 L/min ± 10%
Oxygen Mix (FiO ₂)	21% to 95% ± 5% O ₂
PEEP	0 to 20 cm H ₂ O ± 1, (externally adjusted)
Trigger Sensitivity	-0.25 to -10 cm H ₂ O Pressure, Off
Pressure Support Limit	11 to 50 cm H ₂ O above PEEP ± 2 cm H ₂ O
Pressure Alarm Limit	10 to 55 cm H ₂ O above PEEP ± 2 cm H ₂ O
FiO ₂ Low Pressure Enrichment	21% to 100% (low and high pressure oxygen source)
Altitude	-1200 ft up to 25,000 ft

[▲] Not available for sale in the USA

Power Specifications

Rechargeable Battery Pack	Li 2850 mAh
Non-Rechargeable Battery Pack	Li 3000 mAh
External AC-DC Adaptor	100~264VAC 50/60Hz
External DC-DC Adaptor	18~28VDC 4A max

Ventway Sparrow Packaged

P/N: VWSP-1000



Ventway Sparrow VWSP-100	AC/DC Power Adapter VWSP-141	Rechargeable Battery VWSP-420	Ventway Sparrow IFU VWSP-500
-----------------------------	---------------------------------	----------------------------------	---------------------------------

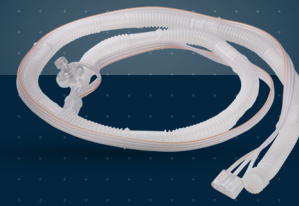
Major Standards

IEC 60601-1, IEC 60601-1-2, IEC 60601-1-12, ISO 80601-2-12, ISO 10651-3, EN 794-3, RTCA DO 160G, EN 1789, IP 45 (with oxygen).

✓ PATIENT CIRCUITS

Patient Circuit | Adult

P/N: VWSP-1450F/1370



Dimensions

Nominal Overall Length	180 / 240 cm
Internal Volume	690 / 920 CC
Inspiratory Resistance to Flow	2.7 cmH ₂ O @ 60 lpm
Dead Space	31 cc
Circuit Compliance	0.001 L/cmH ₂ O
Corrugated Tube Diameter	22 mm
Delivered Tidal Volumes	Tv > 200 cc

Patient Circuit | Pediatric

P/N: VWSP-1550F/1390



Dimensions

Nominal Overall Length	180 / 240 cm
Internal Volume	318 / 424 CC
Inspiratory Resistance to Flow	2.1 cmH ₂ O @ 30 lpm
Dead Space	29 cc
Circuit Compliance	0.0008 L/cmH ₂ O
Corrugated Tube Diameter	15 mm
Delivered Tidal Volumes	50 ml < Tv < 200 cc

✓ ENRICHMENT

Oxygen Mixer

P/N: VWSP-580



Dimensions:

General	150x90x70mm
FiO ₂	30%-95% O ₂
High Pressure	40-60 psi

Oxygen Enrichment Kit

P/N: VWSP-304

Dimensions

Folded	550x90x30 mm
Un-folded	1200x50x30 mm
O ₂ Tube Length	1800 mm
Maximal O ₂ Flow	25 lpm



ENRICHMENT

DISS-DISS Oxygen Tube (green)

P/N: VWSP-590

Dimensions:

In Bag	150x150x40 mm
Nominal Length	1850 mm
Inner core	Medical grade PVC Braid reinforced polyester
Outer Cover	Solid-colored PVC
Working Pressure	200 psi max. @ 70°
Minimum Bend Radius	3 inches
Working Temperature	-5°C to 65°C
Color	Green



DISS-DISS Oxygen Tube (white)

P/N: VWSP-591



DISS-DIN Oxygen Tube (white)

P/N: VWSP-592



DISS-AGA Oxygen Tube (white)

P/N: VWSP-593

✓ POWER SUPPLY & BATTERIES

DC Cable - Without Input Terminal

P/N: VWSP-929

* An adaptor can be provided based on customer's requirements



AC/DC Power Adaptor

P/N: VWSP-141

Dimensions:



Power Adaptor Unit	180x60x50mm
Ventilator Inlet Cable Length	1000mm
Power Source Cable Length	1800mm
Input Voltage	90-264 VAC (Universal)
Input Frequency	47-63 Hz
Input Current	2.0A @ 115 VAC
Operating Temperature	0° - +40°C
Storage Temperature	-40°C - +80°C
Operating Humidity	10-95%
Available Input Plug	EU, US/JP, AUS/N.Z, ISR

DC/DC Car Power Adaptor

P/N: VWSP-142

Dimensions:



Power Adaptor Unit	180x80x50mm
Ventilator Inlet Cable Length	1000mm
Power Source Cable Length	1800mm
Input Voltage	90-264 VAC (Universal)
Input Frequency	47-63 Hz
Input Current	2.5A @ 115 VAC
Operating Temperature	0°C - +40°C
Storage Temperature	-40°C - +80°C
Operating Humidity	10-95%
Available Input Plug	EU, US/JP, AUS/N.Z, ISR

✓ POWER SUPPLY & BATTERIES

Rechargeable Battery

P/N: VWSP-420



Dimensions:

General	85x75x25mm
Nominal Voltage	14.8V
Charging Voltage	16.8V
Rated Capacity	2850mAh ± 50mAh
Maximum Charge Current	2500mA
Maximum Discharge Current	2500mA MAX
Recharge Time	4 hours
Operating Time (Internal Battery)	4 hours
Operation Temperature	-20°C - 50°C
Long Term Storage	-20°C to 25°C
Weight	235g

Non-Rechargeable Battery

P/N: VWSP-430



Dimensions:

General	85x75x25mm
Nominal Voltage	12V
Rated Capacity	3000mAh
Standard Discharge	20Ma ± 50mAh
Maximum Discharge Current	3000mA
Operating Time	3 hours
Operation Temperature	-20°C - 50°C
Storage Temperature	-20°C - 35°C
Weight	175.5g

FILTER UNITS

HME Filter

P/N: VWSP-305



Dimensions:

General	65x65x68 mm
Connector	22F/15M- 22M/15F
Dead Space	35ml
Tidal Volume Range	150~1000ml
Pressure Drop	0.35kpa @30L / min
Moisture Output	≥34.5 mg/l @Vt 1000ml
Bacterial Filtration Efficiency	<99.9999
Viral Filtration Efficiency	<99.99

 Not available for sale in the USA

Bacterial/Viral Filter

P/N: VWSP-306



Dimensions:

General	65x65x68 mm
Connector	22F-22M
Compressible Volume	65ml
Pressure Drop at 30 LPM	1cmH2O
Bacterial Filtration Efficiency	99.99+%
Viral Filtration Efficiency	99.99+%

 Not available for sale in the USA

Filter Pack

P/N: VWSP-810

Internal filters for the ventilator - 5 Pieces



✓ CARRYING AND MOUNTING

Hard Carrying Bag

P/N: VWSP-920*

Unbreakable yet lightweight, a transport and storage case suited for the harshest environments.



Dimensions:

Case Weight	2.8 kg
External	475 x 376 x 178mm
Internal	432 x 300 x 163mm
Water & Dust Resistance	IP67

* Customized based on territory and MOQ

Soft Carrying Bag

P/N: VWSP-910



Dimensions:

General	180x190x100mm
---------	---------------

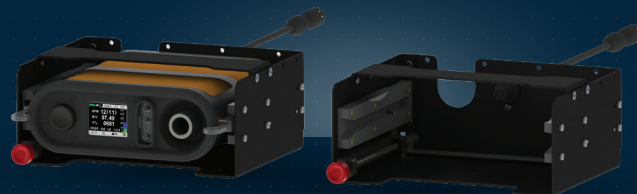
Built from medical grade materials this soft carrying bag is designed for maximum efficiency during treatment.

* Can be carried by hand / on the shoulder / attached to a stretcher.

⚠ Not Berry Amendment compliant

Mounting System for Ventway Sparrow

P/N: VWMNT-200



The VWMNT-200 is a multi-functional mounting system specially designed with integrated connectors for power and oxygen supply. This provides quick access and ease of operation, enabling you to move with your ventilator and transfer your patients safely and quickly from one place to another without compromising the continuity of care.

Product Highlights: • Highly durable • Compatible with the highest standards EN-794; EN-1789 (SAE J3043 Certification in process) • Automatic connection to a power supply • Seamless connection to an oxygen supply • Single button quick release mechanism • Easily mounted on any surface • Multifunctional design to increase flexibility in EMS/CCT Transport protocols • Overall dimensions: Width: 205 mm, Depth: 210 mm, Height: 88 mm



Lubo

Lubo

INV-02-000-IT-7040-02

Mini Lubo

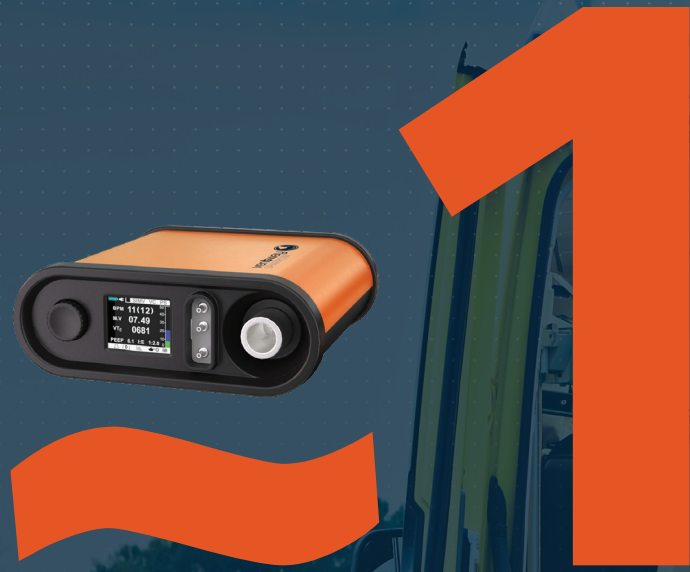
INV-03-000-IT-7040-01

First-Responders Airway Management to Support Non-Invasive Ventilation (NIV)

At the scene of an emergency, every second matters. First responders facing unconscious patients need tools that deliver quality care both quickly and efficiently. The LUBO family of devices does just that, allowing first responders to provide continuous non-invasive airway management (via a mechanical jaw-thrust). The LUBO supports non-invasive ventilation during CPR, and it can be used during mass casualty incidents (MCI).

✓ PRODUCTS LIST & P/N

P/N	PRODUCT DESCRIPTION	PAGE NO.
VWSP-100	Ventway Sparrow	2
VWSP-1000	Ventway Sparrow Packaged	2
VWSP-1450F/1370	Patient Circuit Adult	3
VWSP-1550F/1390	Patient Circuit Pediatric	3
VWSP-580	Oxygen Mixer	3
VWSP-304	Oxygen Enrichment Kit	4
VWSP-590	DISS-DISS Oxygen Tube (green)	4
VWSP-591	DISS-DISS Oxygen Tube (white)	4
VWSP-592	DISS-DIN Oxygen Tube (white)	4
VWSP-593	DISS-AGA Oxygen Tube (white)	4
VWSP-929	DC Cable - Without Input Terminal	5
VWSP-141	AC/DC Power Adaptor	5
VWSP-142	DC/DC Car Power Adaptor	5
VWSP-420	Rechargeable Battery	6
VWSP-430	Non-Rechargeable Battery	6
VWSP-305	HME Filter	7
VWSP-306	Bacterial/Viral Filter	7
VWSP-810	Filter Pack	7
VWSP-920	Hard Carrying Bag	8
VWSP-910	Soft Carrying Bag	8
VWMNT-200	Mounting System for Ventway Sparrow	8
INV-02-000-IT-7040-02	Lubo	9
INV-03-000-IT-7040-01	Mini Lubo	9



KG

ULTRA PORTABLE
TURBINE
VENTILATOR
EMS



Robust

ventway SPARROW



Product Brochure

INOVYTEC 
THE POWER TO SAVE LIVES



✓ Ultra Portable Turbine Ventilator

The Ventway's unique combination of high-performance, functionality, and compact design, position it among the top emergency and transport ventilators.

Designed to be impact resistant, ultra portable and user-friendly, the Ventway Sparrow enhances the standard of care in both Field and Combat medicine. Ventway enables effective ventilation from the point of injury all the way to the ICU while using just one ventilator.



Ultralight
Easy to carry and handle



Maintenance Free
Durable and reliable device that delivers continuous ventilation, and only requires periodic filter replacement



Night Vision
Compatible with goggles



Multifunction
High capabilities to match all scenarios



Energy Flex
Compatible with rechargeable and non-rechargeable battery



High Performance
Hospital grade ventilation at anytime



MRI Compatible
Up to 3 Tesla

Ventway Sparrow - Robust

P/N: VWSP-900

Ventway Sparrow Robust Ventilator MRI Compatible

P/N: VWSP-900MR

Dimensions: 165x167x60 mm | **Weight:** 1.3 kg

P/N: VWSP-900MR

P/N: VWSP-900

NSN# 6530-31-018-4102



Performance Data

Ventilation Modes	SIMV-VC-PS, SIMV-PC, CPAP, HFNC ▲, CPR Mode ▲
Adult & Pediatric	Patient Weight >5 Kg (11 lb)
Respiratory Rate	1 – 60 ± 1 bpm
Peak Inspiratory Pressure	0-60 cm H ₂ O
Tidal Volume	50-2000 mL ±10% + 4 mL
Inspiratory Pressure Limit	11 to 60 cm H ₂ O ± 2 cm H ₂ O or 10% whichever is greater
Inspiratory Time	0.3 to 4 ± 10% sec
I:E Ratio	1:4 to 4:1
Peak Flow (PIF)	Mandatory breaths: 135 L/min (-5% to +10%) Spontaneous breaths: 160 L/min ± 10%
Oxygen Mix (FiO ₂)	21% to 95% ± 5% O ₂
PEEP	0 to 20 cm H ₂ O ± 1, (externally adjusted)
Trigger Sensitivity	-0.25 to -10 cm H ₂ O Pressure, Off
Pressure Support Limit	11 to 50 cm H ₂ O above PEEP ± 2 cm H ₂ O
Pressure Alarm Limit	10 to 55 cm H ₂ O above PEEP ± 2 cm H ₂ O
FiO ₂ Low Pressure Enrichment	21% to 100% (low and high pressure oxygen source)
Altitude	-1200 ft up to 70,000 ft

▲ Not available for sale in the USA

Power Specifications

Rechargeable Battery Pack	Li 2850 mAh
Non-Rechargeable Battery Pack	Li 3000 mAh
External AC-DC Adaptor	100~264VAC 50/60Hz
External DC-DC Adaptor	18~28VDC 4A max

Ventway Sparrow Packaged

P/N: VWSP-9000 | NSN# 6515-31-018-5787

Ventway Sparrow MRI Robust Packaged

P/N: VWSP-9000MR



Ventway Sparrow VWSP-900 / 900MR	AC/DC Power Adapter VWSP-940	Rechargeable Battery VWSP-420	Ventway Sparrow IFU VWSP-500
--	--	---	--

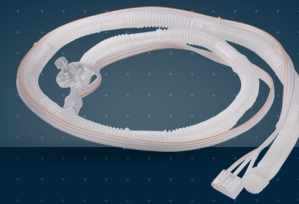
Major Standards

IEC 60601-1, IEC 60601-1-2, IEC 60601-1-12, ISO 80601-2-12, ISO 10651-3, EN 794-3, RTCA DO 160G, EN 1789, IP 45 (with oxygen), MIL-STD-810G, MIL-STD-461G, MIL-STD-1275

✓ PATIENT CIRCUITS

Patient Circuit | Adult [Ⓢ]

P/N: VWSP-1450F/1370



Dimensions

Nominal Overall Length	180 / 240 cm
Internal Volume	690 / 920 CC
Inspiratory Resistance to Flow	2.7 cmH ₂ O @ 60 lpm
Dead Space	31 cc
Circuit Compliance	0.001 L/cmH ₂ O
Corrugated Tube Diameter	22 mm
Delivered Tidal Volumes	Tv > 200 cc

Patient Circuit | Pediatric [Ⓢ]

P/N: VWSP-1550F/1390



Dimensions

Nominal Overall Length	180 / 240 cm
Internal Volume	318 / 424 CC
Inspiratory Resistance to Flow	2.1 cmH ₂ O @ 30 lpm
Dead Space	29 cc
Circuit Compliance	0.0008 L/cmH ₂ O
Corrugated Tube Diameter	15 mm
Delivered Tidal Volumes	50 ml < Tv < 200 cc

✓ ENRICHMENT

Oxygen Mixer

P/N: VWSP-580



Dimensions:

General	150x90x70mm
FiO ₂	30%-95% O ₂
High Pressure	40-60 psi

Oxygen Enrichment Kit

P/N: VWSP-304

Dimensions

Folded	550x90x30 mm
Un-folded	1200x50x30 mm
O ₂ Tube Length	1800 mm
Maximal O ₂ Flow	25 lpm



DISS-DISS Oxygen Tube (green)

P/N: VWSP-590

Dimensions:

In Bag	150x150x40 mm
Nominal Length	1850 mm
Inner core	Medical grade PVC Braid reinforced polyester
Outer Cover	Solid-colored PVC
Working Pressure	200 psi max. @ 70°
Minimum Bend Radius	3 inches
Working Temperature	-5°C to 65°C
Color	Green



DISS-DISS Oxygen Tube (white)

P/N: VWSP-591



DISS-DIN Oxygen Tube (white)

P/N: VWSP-592



DISS-AGA Oxygen Tube (white)

P/N: VWSP-593

✓ POWER SUPPLY & BATTERIES

DC Cable - Without Input Terminal

P/N: VWSP-929

* An adaptor can be provided based on customer's requirements



AC/DC Power Supply

P/N: VWSP-940



Dimensions:

Power Adaptor Unit	180x80x50mm
Ventilator Inlet Cable Length	1000mm
Input Voltage	90-264 VAC (Universal)
Input Frequency	47-63 Hz
Input Current	2.5A @ 115 VAC
Operating Temperature	0°C - +40°C
Storage Temperature	-40°C - +80°C
Operating Humidity	10-95%
Available Input Plug	EU, US/JP, AUS/N.Z., ISR



✓ POWER SUPPLY & BATTERIES

Rechargeable Battery

P/N: VWSP-420



Dimensions:

General	85x75x25mm
Nominal Voltage	14.8V
Charging Voltage	16.8V
Rated Capacity	2850mAh ± 50mAh
Maximum Charge Current	2500mA
Maximum Discharge Current	2500mA MAX
Recharge Time	4 hours
Operating Time (Internal Battery)	4 hours
Operation Temperature	-20°C - 50°C
Long Term Storage	-20°C to 25°C
Weight	235g

Non-Rechargeable Battery

P/N: VWSP-430



Dimensions:

General	85x75x25mm
Nominal Voltage	12V
Rated Capacity	3000mAh
Standard Discharge	20Ma ± 50mAh
Maximum Discharge Current	3000mA
Operating Time	3 hours
Operation Temperature	-20°C - 50°C
Storage Temperature	-20°C - 35°C
Weight	175.5g

✓ FILTER UNITS

HME Filter

P/N: VWSP-305



Dimensions:

General	65x65x68 mm
Connector	22F/15M- 22M/15F
Dead Space	35ml
Tidal Volume Range	150~1000 ml
Pressure Drop	0.35kpa @30L / min
Moisture Output	≥34.5 mg/l @Vt 1000 ml
Bacterial Filtration Efficiency	<99.9999
Viral Filtration Efficiency	<99.99

Bacterial/Viral Filter

P/N: VWSP-306



Dimensions:

General	65x65x68 mm
Connector	22F-22M
Compressible Volume	65 ml
Pressure Drop at 30 LPM	1 cm H2O
Bacterial Filtration Efficiency	99.99+%
Viral Filtration Efficiency	99.99+%

Filter Pack

P/N: VWSP-810

Internal filters for the ventilator - 5 Pieces



✓ CARRYING AND MOUNTING

Hard Carrying Bag

P/N: VWSP-920*

Unbreakable yet lightweight, a transport and storage case suited for the harshest environments.



Dimensions:

Case Weight	2.8 kg
External	475 x 376 x 178mm
Internal	432 x 300 x 163mm
Water & Dust Resistance	IP67

* Customized based on territory and MOQ

Soft Carrying Bag

P/N: VWSP-910



Dimensions:

General	180x190x100mm
---------	---------------

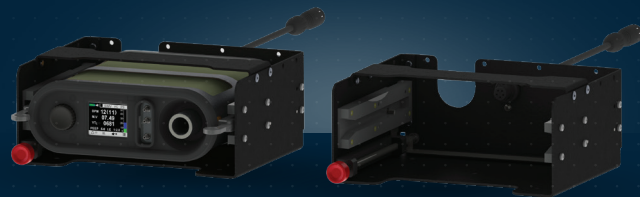
Built from medical grade materials this soft carrying bag is designed for maximum efficiency during treatment.

* Can be carried by hand / on the shoulder / attached to a stretcher.

⚠ Not Berry Amendment compliant

Mounting System for Ventway Sparrow

P/N: VWMNT-200



The VWMNT-200 is a multi-functional mounting system specially designed with integrated connectors for power and oxygen supply. This provides quick access and ease of operation, enabling you to move with your ventilator and transfer your patients safely and quickly from one place to another without compromising the continuity of care.

Product Highlights: • Highly durable • Compatible with the highest standards EN-794; EN-1789 (SAE J3043 Certification in process) • Automatic connection to a power supply • Seamless connection to an oxygen supply • Single button quick release mechanism • Easily mounted on any surface • Multifunctional design to increase flexibility in EMS/CCT Transport protocols • Overall dimensions: Width: 205 mm, Depth: 210 mm, Height: 88 mm



First-Responders Airway Management to Support Non-Invasive Ventilation (NIV)

Optimal airway management in the pre-hospital battlefield setting requires tools that are effective regardless of the situation. The LUBO offers just that by providing continuous airway management (via a mechanical jaw-thrust), supporting non-invasive ventilation, and allowing every medic to attend to multiple casualties while maintaining operational combat readiness.

Lubo

Lubo Robust

INV-02-000-IT-6003-R02

✓ PRODUCTS LIST & P/N

P/N	PRODUCT DESCRIPTION	PAGE NO.
VWSP-900 NSN# 6530-31-018-4102	Ventway Sparrow - Robust	2
VWSP-900MR	Ventway Sparrow Robust Ventilator MRI Compatible	2
VWSP-9000 NSN# 6515-31-018-5787	Ventway Sparrow Packaged	2
VWSP-9000MR	Ventway Sparrow MRI Robust Packaged	2
VWSP-1450F/1370	Patient Circuit Adult	3
VWSP-1550F/1390	Patient Circuit Pediatric	3
VWSP-580	Oxygen Mixer	3
VWSP-304	Oxygen Enrichment Kit	4
VWSP-590	DISS-DISS Oxygen Tube (green)	4
VWSP-591	DISS-DISS Oxygen Tube (white)	4
VWSP-592	DISS-DIN Oxygen Tube (white)	4
VWSP-593	DISS-AGA Oxygen Tube (white)	4
VWSP-929	DC Cable - Without Input Terminal	5
VWSP-940	AC/DC Power Supply	5
VWSP-420	Rechargeable Battery	6
VWSP-430	Non-Rechargeable Battery	6
VWSP-305	HME Filter	7
VWSP-306	Bacterial/Viral Filter	7
VWSP-810	Filter Pack	7
VWSP-920	Hard Carrying Bag	8
VWSP-910	Soft Carrying Bag	8
VWMNT-200	Mounting System for Ventway Sparrow	8
INV-02-000-IT-6003-R02	Lubo Robust	9



1

KG

**ULTRA PORTABLE
TURBINE
VENTILATOR
ROBUST**



MR
ventway
SPARROW



Product Brochure

INOVYTEC 
THE POWER TO SAVE LIVES



✓ An In-Hospital Ultra Portable Turbine Ventilator

The Ventway's unique combination of high-performance, functionality, MRI compatibility, and compact design, position it among the top In-Hospital transport ventilators.

Designed to be impact resistant, ultra portable and user-friendly, Ventway enhances the standard of care in transport medicine.



Ultralight

Easy to carry and handle



MRI Compatible

Up to 3 Tesla



High Performance

Advanced capabilities to match all in-hospital transport scenarios



Maintenance Free

Durable and reliable device that delivers continuous ventilation and only requires periodic filter replacement

Ventway Sparrow-MR

P/N: VWSP-100MR

Dimensions: 165x167x60 mm | Weight 1.3 kg



Performance Data

Ventilation Modes	SIMV-VC-PS, SIMV-PC, CPAP, HFNC [▲] , CPR Mode [▲]
Adult & Pediatric	Patient Weight >5 Kg (11 lb)
Respiratory Rate	1 – 60 ± 1 bpm
Peak Inspiratory Pressure	0-60 cm H ₂ O
Tidal Volume	50-2000 mL ±10% + 4 mL
Inspiratory Pressure Limit	11 to 60 cm H ₂ O ± 2 cm H ₂ O or 10% whichever is greater
Inspiratory Time	0.3 to 4 ± 10% sec
I:E Ratio	1:4 to 4:1
Peak Flow (PIF)	Mandatory breaths: 135 L/min (-5% to +10%) Spontaneous breaths: 160 L/min ± 10%
Oxygen Mix (FiO ₂)	21% to 95% ± 5% O ₂
PEEP	0 to 20 cm H ₂ O ± 1, (externally adjusted)
Trigger Sensitivity	-0.25 to -10 cm H ₂ O Pressure, Off
Pressure Support Limit	11 to 50 cm H ₂ O above PEEP ± 2 cm H ₂ O
Pressure Alarm Limit	10 to 55 cm H ₂ O above PEEP ± 2 cm H ₂ O
FiO ₂ Low Pressure Enrichment	21% to 100% (low and high pressure oxygen source)
Altitude	-1200 ft up to 25,000 ft

[▲] Not available for sale in the USA

Power Specifications

Rechargeable Battery Pack	Li 2850 mAh
Non-Rechargeable Battery Pack	Li 3000 mAh
External AC-DC Adaptor	100~264VAC 50/60Hz
External DC-DC Adaptor	18~28VDC 4A max

Ventway Sparrow-MR Packaged

P/N: VWSP-1000MR



Ventway Sparrow VWSP-100MR	AC/DC Power Adapter VWSP-141	Rechargeable Battery VWSP-420	Ventway Sparrow IFU VWSP-500
--------------------------------------	--	---	--

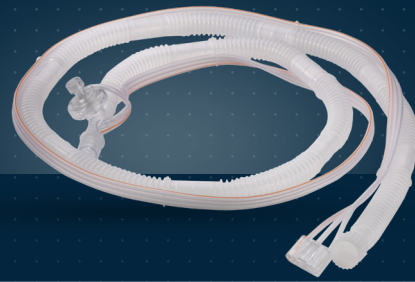
Major Standards

IEC 60601-1, IEC 60601-1-2, IEC 60601-1-12, ISO 80601-2-12, ISO 10651-3, EN 794-3, RTCA DO 160G, EN 1789, IP 45 (with oxygen), ASTM F2119 3 Tesla.

✓ PATIENT CIRCUITS

Patient Circuit | Adult

P/N: VWSP-1450F/1370



Dimensions

Nominal Overall Length	180 / 240 cm
Internal Volume	690 / 920 CC
Inspiratory Resistance to Flow	2.7 cmH ₂ O @ 60 lpm
Dead Space	31 cc
Circuit Compliance	0.001 L/cmH ₂ O
Corrugated Tube Diameter	22 mm
Delivered Tidal Volumes	Tv > 200 cc

Patient Circuit | Pediatric

P/N: VWSP-1550F/1390



Dimensions

Nominal Overall Length	180 / 240 cm
Internal Volume	318 / 424 CC
Inspiratory Resistance to Flow	2.1 cmH ₂ O @ 30 lpm
Dead Space	29 cc
Circuit Compliance	0.0008 L/cmH ₂ O
Corrugated Tube Diameter	15 mm
Delivered Tidal Volumes	50 ml < Tv < 200 cc

Oxygen Mixer

P/N: VWSP-580

Dimensions:

General	150x90x70mm
FiO ₂	30%-95% O ₂
High Pressure	40-60 psi



Oxygen Enrichment Kit

P/N: VWSP-304

Dimensions

Folded	550x90x30 mm
Un-folded	1200x50x30 mm
O ₂ Tube Length	1800 mm
Maximal O ₂ Flow	25 lpm



DISS-DISS Oxygen Tube (green)

P/N: VWSP-590



Dimensions:

In Bag	150x150x40 mm
Nominal Length	1850 mm
Inner core	Medical grade PVC Braid reinforced polyester
Outer Cover	Solid-colored PVC
Working Pressure	200 psi max. @ 70°
Minimum Bend Radius	3 inches
Working Temperature	-5° C to 65° C
Color	Green

DISS-DISS Oxygen Tube (white)

P/N: VWSP-591



DISS-DIN Oxygen Tube (white)

P/N: VWSP-592



DISS-AGA Oxygen Tube (white)

P/N: VWSP-593



✓ POWER SUPPLY & BATTERIES

AC/DC Power Adaptor

P/N: VWSP-141



Dimensions:

Power Adaptor Unit	180x60x50mm
Ventilator Inlet Cable Length	1000mm
Power Source Cable Length	1800mm
Input Voltage	90-264 VAC (Universal)
Input Frequency	47-63 Hz
Input Current	2.0A @ 115 VAC
Operating Temperature	0° - +40°C
Storage Temperature	-40°C - +80°C
Operating Humidity	10-95%
Available Input Plug	EU, US/JP, AUS/N.Z, ISR



✓ POWER SUPPLY & BATTERIES

Rechargeable Battery

P/N: VWSP-420



Dimensions:

General	85x75x25mm
Nominal Voltage	14.8V
Charging Voltage	16.8V
Rated Capacity	2850mAh ± 50mAh
Maximum Charge Current	2500mA
Maximum Discharge Current	2500mA MAX
Recharge Time	4 hours
Operating Time (Internal Battery)	4 hours
Operation Temperature	-20°C - 50°C
Long Term Storage	-20°C to 25°C
Weight	235g

Non-Rechargeable Battery

P/N: VWSP-430



Dimensions:

General	85x75x25mm
Nominal Voltage	12V
Rated Capacity	3000mAh
Standard Discharge	20mA ± 50mAh
Maximum Discharge Current	3000mA
Operating Time	3 hours
Operation Temperature	-20°C - 50°C
Storage Temperature	-20°C - 35°C
Weight	175.5g

✓ FILTER UNITS

HME Filter

P/N: VWSP-305



Dimensions:

General	65x65x68 mm
Connector	22F/15M- 22M/15F
Dead Space	35ml
Tidal Volume Range	150~1000ml
Pressure Drop	0.35kpa @30L / min
Moisture Output	≥34.5 mg/l @Vt 1000ml
Bacterial Filtration Efficiency	<99.9999
Viral Filtration Efficiency	<99.99

⚠ Not available for sale in the USA

Bacterial/Viral Filter

P/N: VWSP-306



Dimensions:

General	65x65x68 mm
Connector	22F-22M
Compressible Volume	65ml
Pressure Drop at 30 LPM	1cmH2O
Bacterial Filtration Efficiency	99.99+%
Viral Filtration Efficiency	99.99+%

⚠ Not available for sale in the USA

Filter Pack

P/N: VWSP-810

Internal filters for the ventilator - 5 Pieces



✓ CARRYING AND MOUNTING

Ventway Package Box

P/N: VWSP-226



Dimensions:

General	389 x 259 x 210mm
---------	-------------------

✓ CARRYING AND MOUNTING

Universal Mounting Rig

P/N: VWMNT-100



✓ PRODUCTS LIST & P/N

P/N	PRODUCT DESCRIPTION	PAGE NO.
VWSP-100MR	Ventway Sparrow-MR	2
VWSP-1000MR	Ventway Sparrow-MR Packaged	2
VWSP-1450F/1370	Patient Circuit Adult	3
VWSP-1550F/1390	Patient Circuit Pediatric	3
VWSP-580	Oxygen Mixer	4
VWSP-304	Oxygen Enrichment Kit	4
VWSP-590	DISS-DISS Oxygen Tube (green)	5
VWSP-591	DISS-DISS Oxygen Tube (white)	5
VWSP-592	DISS-DIN Oxygen Tube (white)	5
VWSP-593	DISS-AGA Oxygen Tube (white)	5
VWSP-141	AC/DC Power Adaptor	6
VWSP-420	Rechargeable Battery	7
VWSP-430	Non-Rechargeable Battery	7
VWSP-305	HME Filter	8
VWSP-306	Bacterial/Viral Filter	8
VWSP-810	Filter Pack	8
VWSP-226	Ventway Package Box	9
VWMNT-100	Universal Mounting Rig	9



≈ 1

KG

ULTRA PORTABLE
TURBINE
VENTILATOR
HOSPITAL